

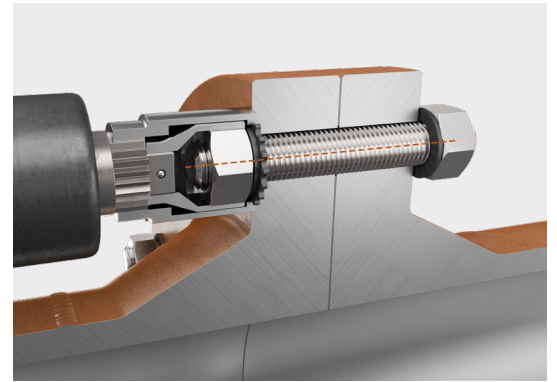
# GRIPWASHER BS-Disc



## Specifications

- No additional counter-holding measures or second person required for bolted joint assembly
- Immediate, effective locking even at low preload forces
- Ideal for installation in confined spaces
- Tightening and loosening possible with access from only one side
- Friction based positive locking
- Effectively prevents turning on the passive side
- Prevention of accidents at work by eliminating reaction arms
- Protection against self-rotation when combined with the GripWasher NS-Disc

# GRIPWASHER BS-Disc



Using a GripWasher NS-Disc and BS-Disc in a through hole

## Technical data

- Backup-washer for use with the GripWasher NS-Disc
- Material: 1.1191 (C45E) with black zinc flake coating (flZnnc)
- Hardness: 485±25 HV0,3
- Corrosion resistance: min.1,000 h in NSS-test according to ISO 9227
- Suitable for high-strength bolts and nuts up to strength class 12.9 / 12
- Available dimensions: M16 - M48 (5/8"- 1 3/4")
- Other nominal sizes, materials and coatings available on request

## Models

<b>GWBS_16</b>	M16
<b>GWBS_18</b>	M18
<b>GWBS_20</b>	M20
<b>GWBS_22</b>	M22
<b>GWBS_24</b>	M24

<b>GWBS_26</b>	M26
<b>GWBS_28</b>	M28
<b>GWBS_30</b>	M30
<b>GWBS_32</b>	M32
<b>GWBS_34</b>	M34

<b>GWBS_36</b>	M36
<b>GWBS_38</b>	M38
<b>GWBS_40</b>	M40
<b>GWBS_42</b>	M42
<b>GWBS_44</b>	M44

<b>GWBS_46</b>	M46
<b>GWBS_48</b>	M48